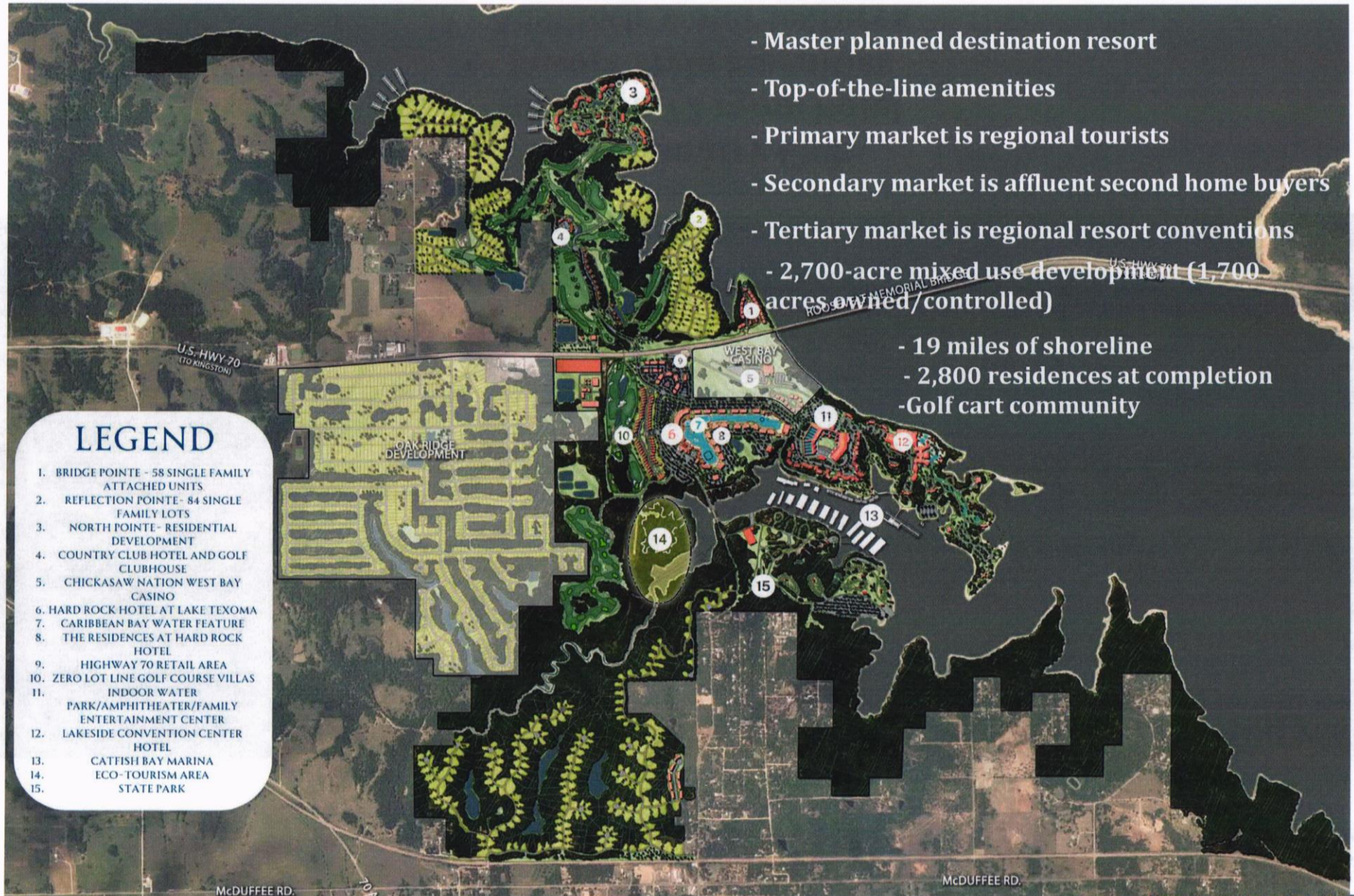




# Project Scope



- Master planned destination resort
- Top-of-the-line amenities
- Primary market is regional tourists
- Secondary market is affluent second home buyers
- Tertiary market is regional resort conventions
- 2,700-acre mixed use development (1,700 acres owned/controlled)
- 19 miles of shoreline
- 2,800 residences at completion
- Golf cart community

## LEGEND

1. BRIDGE POINTE - 58 SINGLE FAMILY ATTACHED UNITS
2. REFLECTION POINTE- 84 SINGLE FAMILY LOTS
3. NORTH POINTE- RESIDENTIAL DEVELOPMENT
4. COUNTRY CLUB HOTEL AND GOLF CLUBHOUSE
5. CHICKASAW NATION WEST BAY CASINO
6. HARD ROCK HOTEL AT LAKE TEXOMA
7. CARIBBEAN BAY WATER FEATURE
8. THE RESIDENCES AT HARD ROCK HOTEL
9. HIGHWAY 70 RETAIL AREA
10. ZERO LOT LINE GOLF COURSE VILLAS
11. INDOOR WATER PARK/AMPHITHEATER/FAMILY ENTERTAINMENT CENTER
12. LAKESIDE CONVENTION CENTER HOTEL
13. CATTISH BAY MARINA
14. ECO-TOURISM AREA
15. STATE PARK

# Country Club Hotel



- **New Country Club**
- **Attached 72 room hotel**
- **Resort-style amenities**
- **Aesthetic water features**
- **Outdoor events area**

# Lakeside Resort Hotel and Convention Center



- 350 Rooms
- Attached 80,000 sq. ft. Convention Center
- Additional meeting rooms
- Multiple dining options

## Hard Rock Hotel at Lake Texoma

- 189 room luxury 4-star hotel built around a 10-acre Caribbean Bay
- Dedicated meeting space

## The Residences at HRH at Lake Texoma

- Phase I- 7 residence buildings with 8-16 units each
- Phase II- 13 residence buildings with 8-16 units each, resident only beach and event center

## 2 Large Public Access Recreational Areas



Each unit may be entered into a hotel managed rental program.  
Most of the larger units have lock out units.

# Hard Rock Hotel at Lake Texoma TIF District I



# Hard Rock Hotel at Lake Texoma



# Hard Rock Hotel at Lake Texoma Conference Center



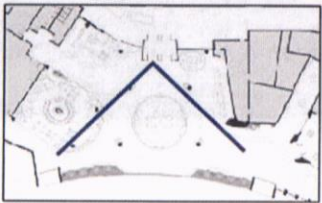
# Hotel Porte Cochere





# Hotel Main Lobby

ENTRY VIEW & LOBBY LOUNGE



KEY PLAN

# Hotel Lobby Bar



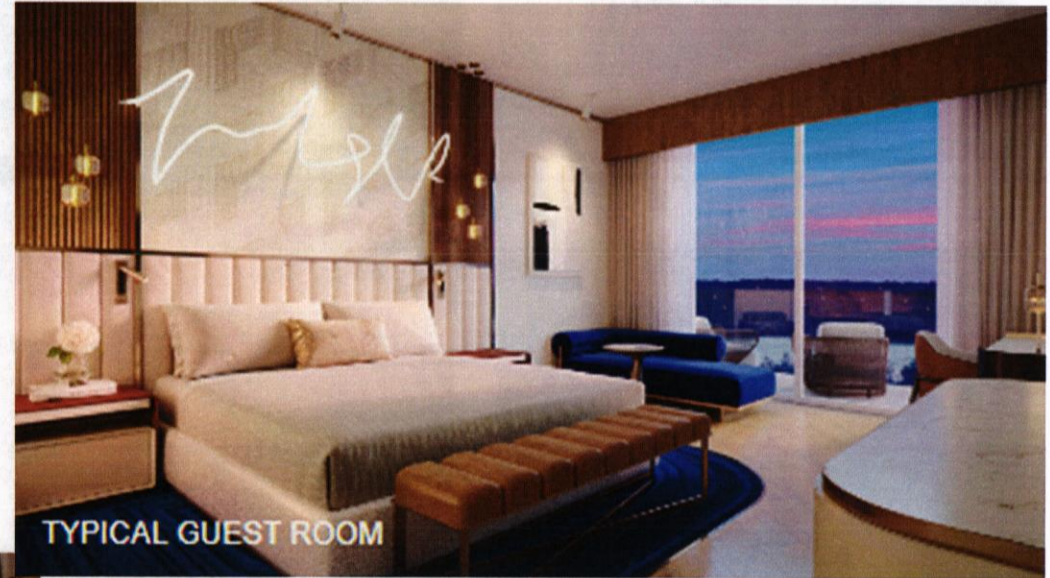
# Hotel Conference Center



# Guest Rooms and Suites

## Room Program

- 189 Hotel Rooms
- 1 Rock Star Suite
- 24 Suites
- 164 Standard Rooms



TYPICAL GUEST ROOM



TYPICAL SUITE

# Public Access Area



# Entertainment Complex

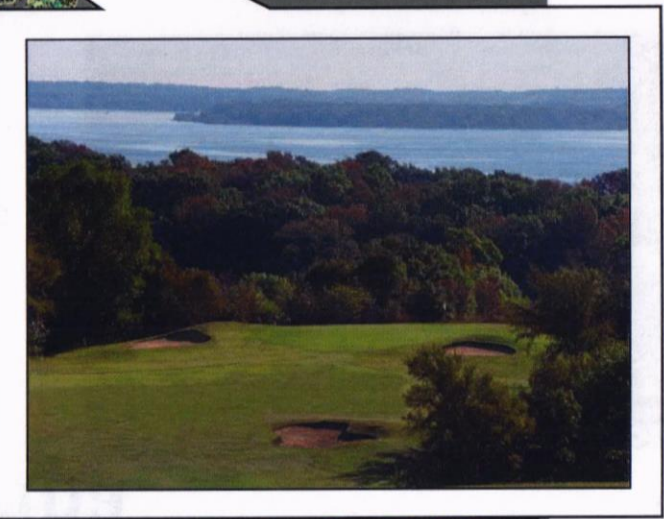
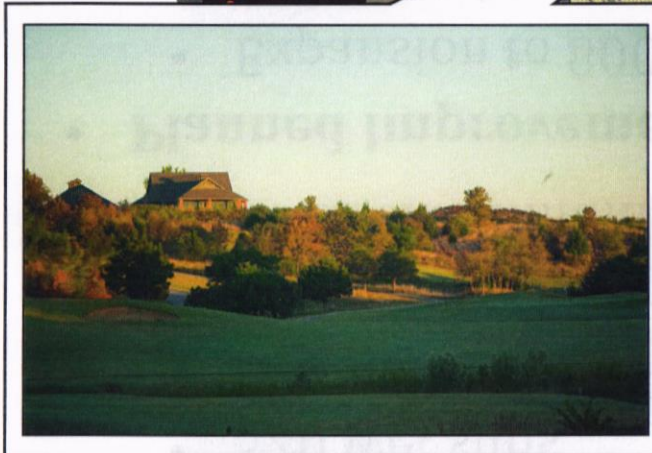
## Waterpark and Family Entertainment Center



- Pedestrian oriented
- Family Entertainment Center
- Waterpark
- Entertainment Lawn

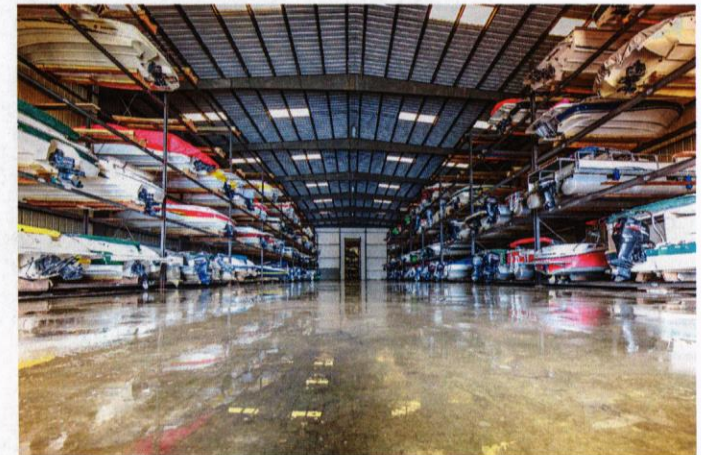
# Chickasaw Pointe Golf Course

- Chickasaw Pointe Golf Course
  - Redeveloped to enhance quality and recapture land for lots
  - Top 5 ranked public course in OK



## Catfish Bay Marina

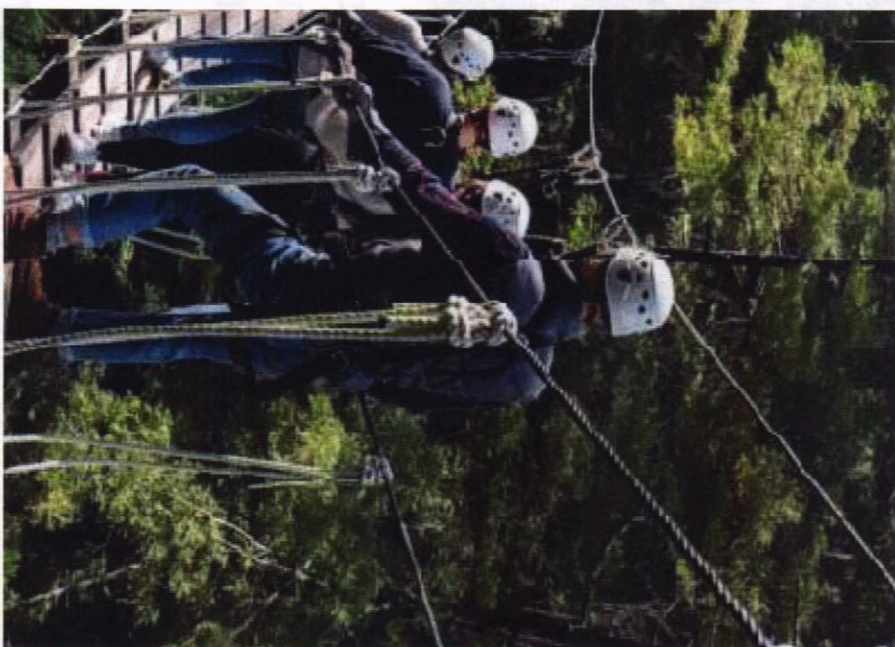
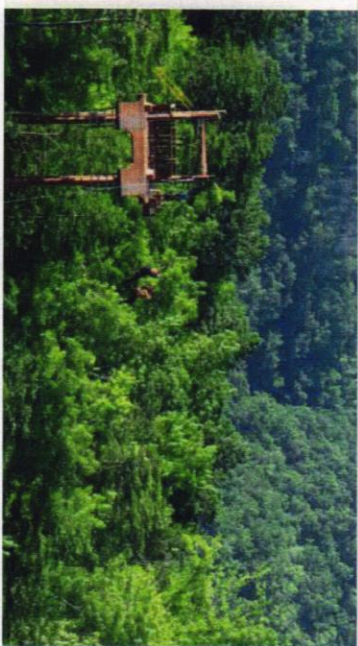
- **Current Amenities**
  - 320 wet slips
  - Dry surface storage
  - Full-service boat gas station
  - 80 dockominiums
- **Planned Improvements**
  - Expansion to 800 term rental slips and 100-day slips
  - 200-unit dry stack storage unit
  - Floating entertainment bar/venue
  - Satellite day rental slips





## Adventure Park

Additional activities tourists can enjoy during the “shoulder months” utilizing land in the Pointe Vista development. Activities shown are: Ziplines, Mountain Biking, Sled Hills, and Sky Bridges.



# Under Construction



## Bridge Point

- 58 Single Family Attached Units
- Three different product types

## Reflection Point

- 84 Single Family Lots
- Four units under construction



# Hard Rock Hotel at Lake Texoma

